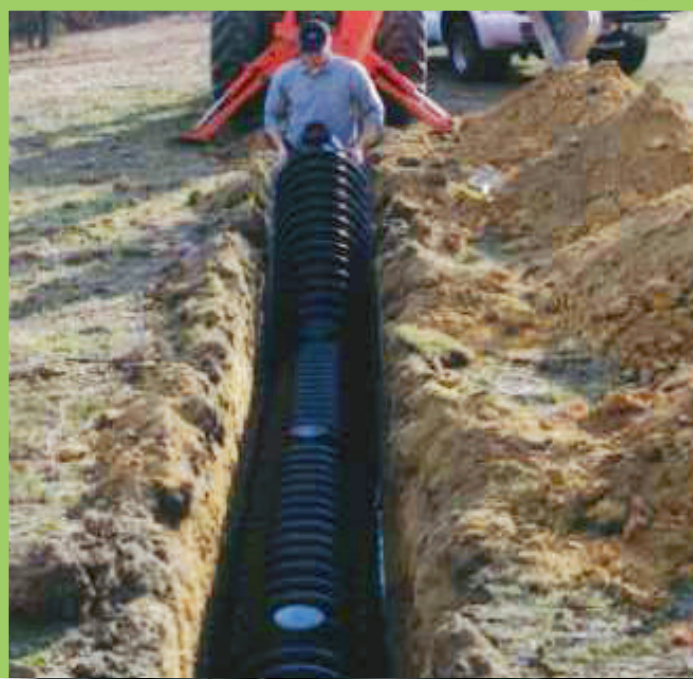




# ARC™ 24 Leaching Chamber



Save time and labor with the  
ARC 24 Septic Leaching Chamber.



# ARC™ 24 Leaching Chamber

## Save time and labor with the ARC 24 Septic Leaching Chamber.

Leaching chambers are rapidly becoming the product of choice for leachfield applications over conventional pipe and gravel systems. Their lightweight construction offers lower installed costs and less intrusive installations.



*Injection-molded, lightweight and sturdy design.*

### Engineered for optimal performance.

The new ARC 24 septic leaching chamber is a sturdy, lightweight plastic unit that combines a maximized infiltrative surface area and storage capacity with an improved structural design to handle most any conventional leachfield system challenge.

This unique combination allows for increased effluent dispersal performance and improved structural integrity as well as ease of installation and simplified contouring capabilities.

Now you can save labor, time on the job, and materials with the ARC 24 chamber without sacrificing performance.



*Anti-articulation tab maintains alignment unless a curved chamber line is desired.*



*Ideal for residential and commercial wastewater disposal applications*



*Fast, easy installations*



*Integral articulating joint.*

**An effective solution for new onsite wastewater installations and existing leachfield system repairs.**

## Design features

- Injection-molded, lightweight and sturdy design.
- 20-degree integral articulating joint that is ideal for either straight or contoured septic leachfield applications.
- True corrugated chamber design eliminates flat surfaces and provides increased load bearing capability in the trench.
- Designed to accommodate both gravity-fed and pressure-dosed systems.
- Wide mouth modified post-and-dome connection maximizes swivel contact area between adjoining chambers for added strength and stability.
- New anti-articulation tab maintains alignment of

chambers when engaged. If movement is required, the chamber allows for 10 degrees turning in either direction.

## Maximum job site flexibility. Easy installation.

- Integral articulating joint.
- A universal inlet/outlet end cap.
- Convenient five-foot lengths are easy to handle.
- Anti-articulation tab ensures straight chamber alignment and limits movement in bed and mound installation applications.
- Easy removal of the anti-articulation tab allows for 10 degree turning in either directions.

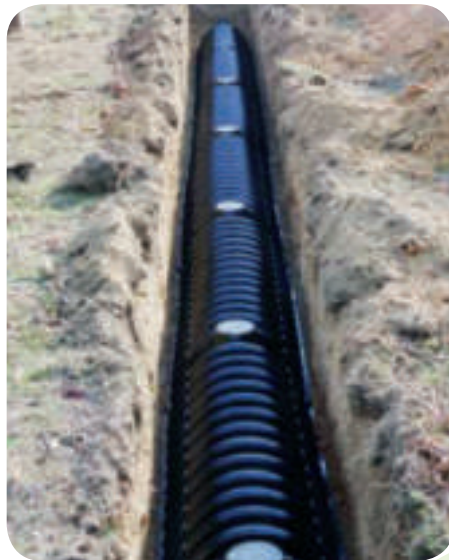


*"This is, without question, the best chamber product I have ever installed. I was most impressed by the strength and ease of installation of the ARC 24 product"*

*Todd Williams  
Todd Williams Construction*



*Easily transported to the job site.*



*Anti-articulation tabs ensure lineal alignment*



*Ideal for contoured applications.*



*Leachfield Chamber*

# Product Specs



## ADS ARC™ 24 Leaching Chamber Specification

### Scope

This specification describes the ARC™ 24 chamber unit for use in onsite wastewater disposal applications.

### Material properties

Each chamber shall be manufactured from high-density polyethylene as defined and described in IAPMO PS 63.

### Installation

Installation shall be in accordance with ADS installation procedures and those issued by the local health department regulations.

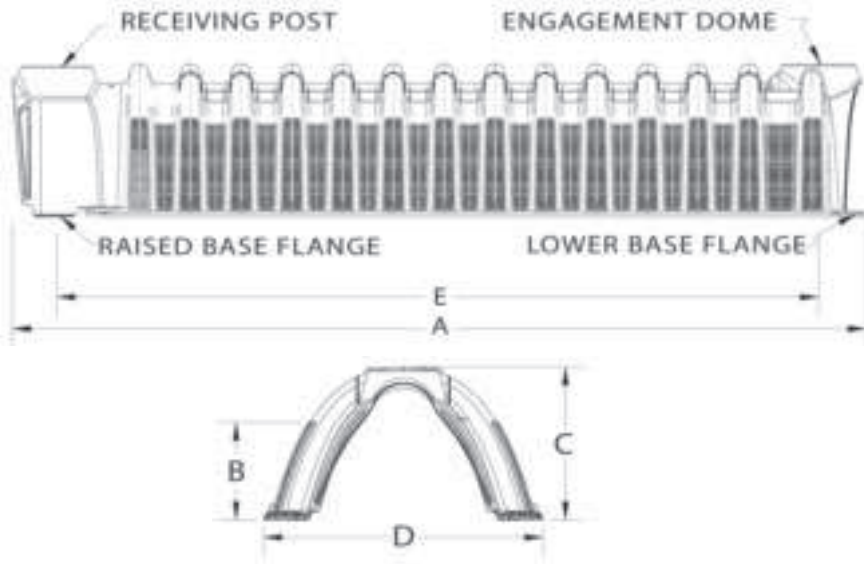
### Chamber requirements

ARC™ 24 chambers are manufactured from high-density polyethylene with an open bottom, solid top and louvered sidewalls. Sidewall louvers shall be designed to minimize soil intrusion.

Chamber shall meet the load rating of H-10 (16,000 lbs. per axle) with a minimum of 12 inches of cover when tested in accordance with IAPMO PS 63 and installed in accordance with manufacturer's installation procedures.

### Chamber connection

Each chamber shall interlock with an integral articulating joint. Articulating joints shall have a free range of horizontal rotation of 20 degrees, with a maximum of 10 degrees in either direction. Articulating joint shall be constructed by placing the dome engagement of the incoming chamber over the post circumference of the previously-installed chamber, with final engagement occurring when the lower base flanges of the incoming chamber under-lap the raised base flanges of the previously-installed chamber.



ARC 24 Nominal Dimensions	
Length (A)	67"
Repeat Length (E)	60"
Side Wall Height (B)	7.5"
Overall Height (C)	12"
Overall Width (D)	22.5"
Capacity	5.02 cu. ft. (37.5 gal)
Pallet Quantity	120 chambers
Van (Box Trailer) Qty.	17 pallets
Flatbed Quantity	15 pallets

ADS Terms and Conditions of Sale are available on the ADS website, [www.ads-pipe.com](http://www.ads-pipe.com)



ADVANCED DRAINAGE SYSTEMS, INC.  
4640 TRUEMAN BLVD., HILLIARD, OH 43026  
800-821-6710 [www.ads-pipe.com](http://www.ads-pipe.com)

Advanced Drainage Systems, the Green Stripe and Arc™ are registered trademarks of Advanced Drainage Systems, Inc.  
© 2007 Advanced Drainage Systems, Inc. BRO 10596  
01/07

THE MOST  
ADVANCED  
NAME IN  
DRAINAGE  
SYSTEMS®