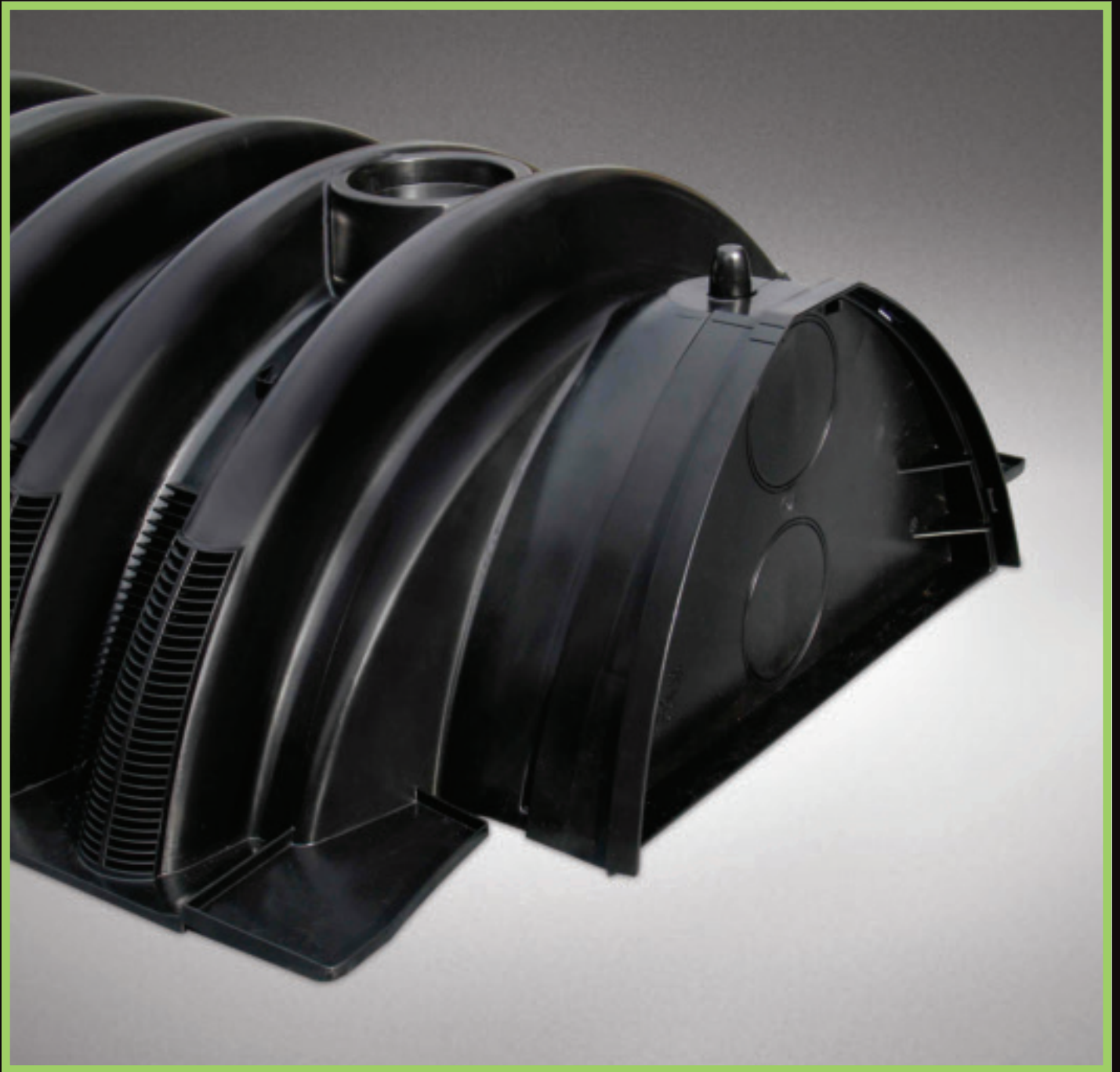




# Arc™ 36 Leaching Chamber



Save time and labor with the  
Arc 36 Septic Leaching Chamber.



# Arc™ 36 Leaching Chamber

## Save time and labor with the Arc 36 Septic Leaching Chamber.

Leaching chambers are rapidly becoming the product of choice for leachfield applications over conventional pipe and gravel systems. Their lightweight construction offers lower installed costs and less intrusive installations.

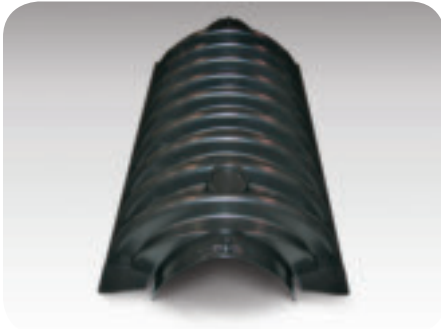
### Engineered for optimal performance.

The Arc 36 septic leaching chamber is a sturdy, lightweight plastic unit that combines maximized infiltrative surface area and storage capacity with an improved structural design to handle most any conventional leachfield system challenge.

The result is an effective solution for both new onsite wastewater system installations and existing septic leachfield repairs.

Now you can save labor, time on the job, and materials with the Arc 36 chamber without sacrificing performance.

This unique combination allows for increased effluent dispersal performance and improved structural integrity as well as ease of installation and simplified contouring capabilities.



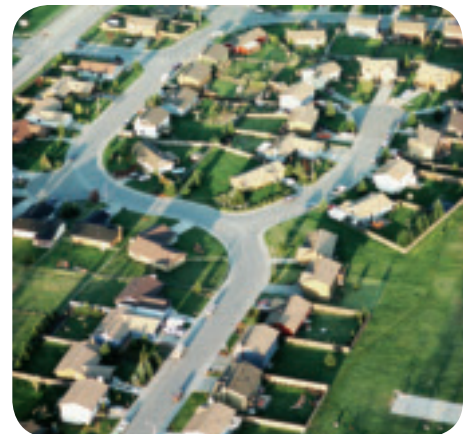
*Injection-molded, lightweight and sturdy design.*



*Integral articulating joint.*



*Superior joint design that gets stronger during backfill.*



*Innovative design for maximum flexibility.*

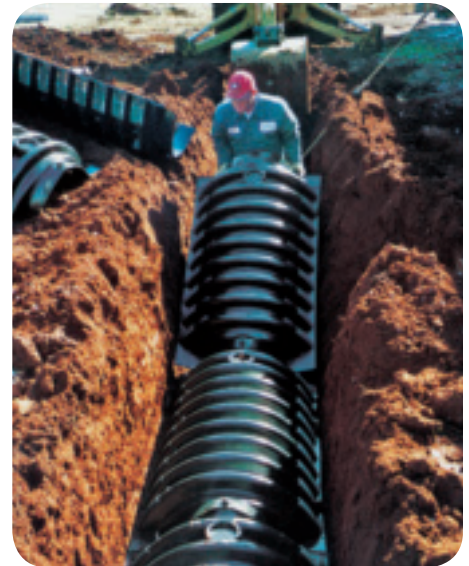
**An effective solution for new onsite wastewater installations and existing leachfield system repairs.**

## Design features

- Injection-molded, lightweight and sturdy design.
- 20-degree integral articulating joint that is ideal for either straight or contoured septic leachfield applications.
- True corrugated chamber design eliminates flat surfaces and provides increased load bearing capability in the trench.
- Joint also incorporates a modified post and dome design for added strength at critical joint connections.
- Designed to accommodate both gravity-fed and pressure-dosed systems.

## Maximum job site flexibility. Easy installation.

- Integral articulating joint.
- A universal inlet/outlet end cap.
- Inspection vent ports on every unit with easy-to-remove knockouts for maximum job site flexibility.
- Convenient five-foot lengths are easy to handle.
- Quickly installed by one person into three-foot wide trench or bed applications.
- Unique stacking post feature for increased pallet stability.



*Convenient five-foot lengths are easy to handle.*



*Easily transported to the job site.*



*Ideal for contoured applications.*

# Product Specs



## ADS Arc™ 36 Leaching Chamber Specification

### Scope

This specification describes the Arc™ 36 chamber unit for use in onsite wastewater disposal applications.

### Chamber requirements

Arc™ 36 chambers are manufactured from high-density polyethylene with an open bottom, solid top and louvered sidewalls. Sidewall louvers shall be designed to minimize soil intrusion.

Chamber shall meet the load rating of H-10 (16,000 lbs. per axle) with a minimum of 12 inches of cover when tested in accordance with IAPMO PS 63 and installed in accordance with manufacturer's installation procedures.

### Chamber connection

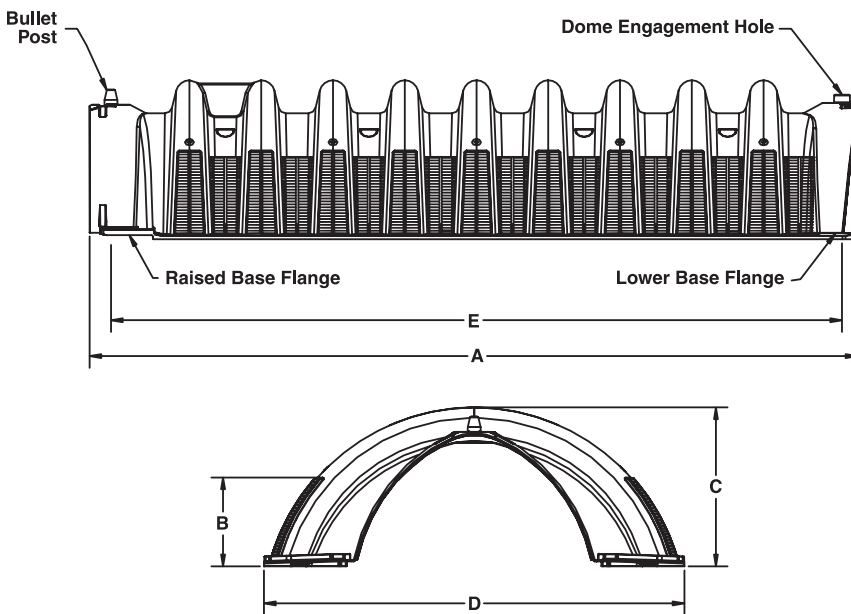
Each chamber shall interlock with an integral articulating joint. Articulating joints shall have a free range of horizontal rotation of 20 degrees, with a maximum of 10 degrees in either direction. Articulating joint shall be constructed by placing the dome engagement hole of the incoming chamber over the bullet post of the previously-installed chamber, with final engagement occurring when the lower base flanges of the incoming chamber under-lap the raised base flanges of the previously-installed chamber.

### Material properties

Each chamber shall be manufactured from high-density polyethylene as defined and described in IAPMO PS 63.

### Installation

Installation shall be in accordance with ADS installation procedures and those issued by the local health department regulations.



Arc™ 36 Nominal Dimensions and Specifications	
Length (A)	63"
Repeat Length (E)	60"
Side Wall Height (B)	7.13"
Overall Height (C)	13"
Overall Width (D)	34.5"
Capacity	8.04 cu. ft. (60.14 gal)
Weight	16 lbs.
Pallet Quantity	60 chambers
Van (Box Trailer) Qty.	25 pallets
Flatbed Quantity	22 pallets

ADS Terms and Conditions of Sale are available on the ADS website, [www.ads-pipe.com](http://www.ads-pipe.com)



ADVANCED DRAINAGE SYSTEMS, INC.  
4640 TRUAMAN BLVD., HILLIARD, OH 43026  
800-821-6710 [www.ads-pipe.com](http://www.ads-pipe.com)

Advanced Drainage Systems, the Green Stripe, and Arc are registered trademarks of Advanced Drainage Systems, Inc.  
© 2007 Advanced Drainage Systems, Inc. BRO 10568  
05/07

THE MOST  
ADVANCED  
NAME IN  
DRAINAGE  
SYSTEMS®