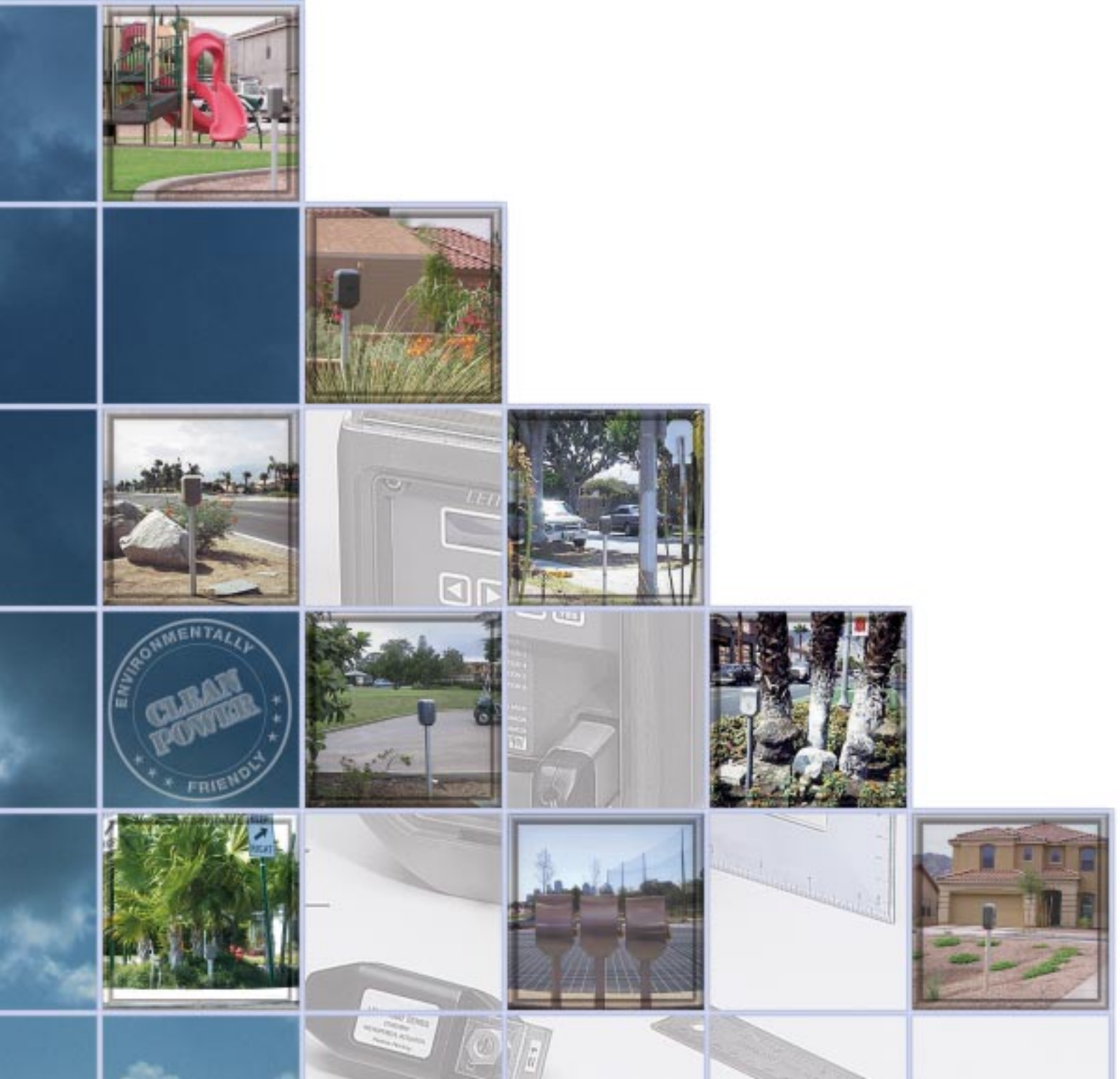


LEIT

Light Energized Irrigation Technology



Ambient Light Powered Irrigation Controllers The Preferred Power Irrigation Solution



Progress and Innovation...

Energy Efficient LEIT Power Controllers.

In an era of increasing energy costs, many questions regarding alternative energy have arisen. The irrigation industry has a definitive need for answers as well as a commitment to long term, quality solutions.

At DIG Corporation, we are committed to provide answers to those questions, with innovative products. DIG is dedicated to a commitment to excellence in both the quality and manufacture of these products.

Built-in quality encompasses:

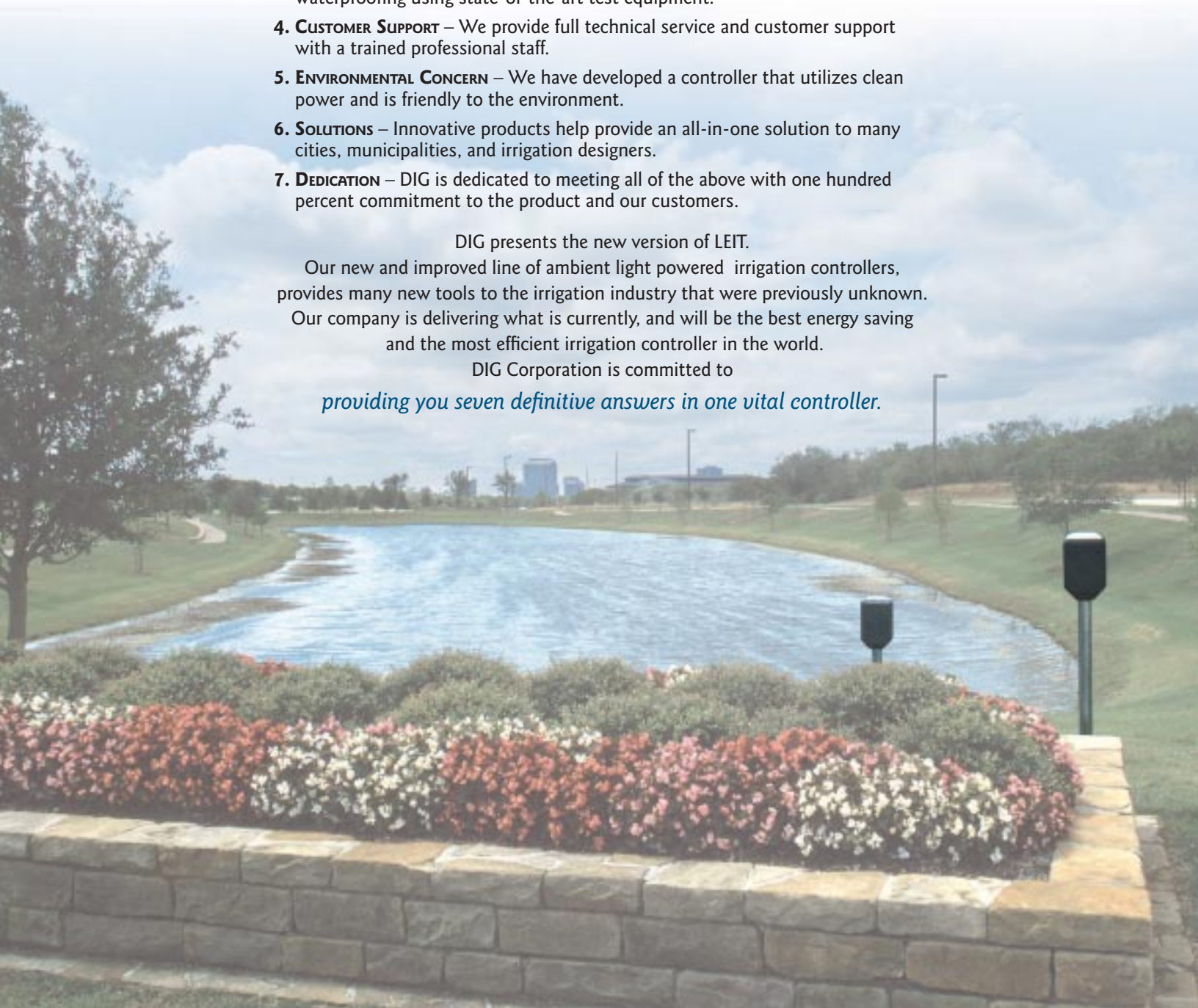
- 1. EFFICIENT MANUFACTURING** – LEIT Controllers are manufactured in one of the most technically advanced facilities in the USA.
- 2. QUALITY** – LEIT controllers are manufactured to the highest quality control standard for the class of product (ISO 9002).
- 3. TESTING** – We functionally test every controller for operational sequencing and waterproofing using state-of-the-art test equipment.
- 4. CUSTOMER SUPPORT** – We provide full technical service and customer support with a trained professional staff.
- 5. ENVIRONMENTAL CONCERN** – We have developed a controller that utilizes clean power and is friendly to the environment.
- 6. SOLUTIONS** – Innovative products help provide an all-in-one solution to many cities, municipalities, and irrigation designers.
- 7. DEDICATION** – DIG is dedicated to meeting all of the above with one hundred percent commitment to the product and our customers.

DIG presents the new version of LEIT.

Our new and improved line of ambient light powered irrigation controllers, provides many new tools to the irrigation industry that were previously unknown. Our company is delivering what is currently, and will be the best energy saving and the most efficient irrigation controller in the world.

DIG Corporation is committed to

providing you seven definitive answers in one vital controller.





| | |
|--|-------|
| LEIT 4000 Series Controller | 3 |
| LEIT 4000E Series Controller | 4 |
| LEIT X Series Controller | 5-6 |
| LEIT XR Series Controller | 7-8 |
| LEMA 150-XXX Series Valves | 9 |
| LEMA 1500 Series Actuator | 10 |
| Accessories | 11-13 |
| Warranty | 14 |

For more information call:

1-800-322-9146

www.digcorp.com

This catalog is also available in Acrobat PDF format on the web.

LEIT

4000 Series Controller

Four, six and eight station standard series



The LEIT® 4000 and 4000E are advanced “light powered” water-management Irrigation Controllers. The LEIT 4000 series controllers are easy to use with a fast menu base and straightforward programming. Features include independent programs for each valve, monthly budget, rain delays and status reports for past and current months. Compact design and time-tested photo-voltaic module harness the energy of ambient light to power the unit day and night in any kind of weather, anywhere in the world.

Features

- ◆ Operates 4, 6 or 8 stations and a master valve or pump start without AC power hookup, batteries or conventional solar panels (master valve or pump start replace station 8 when required)
- ◆ Bilingual software in English or Spanish
- ◆ Controller functions and operations are 100% tested
- ◆ Controller water proofing is 100% tested
- ◆ Built to the highest quality control standard (ISO 9002)
- ◆ Non-volatile memory holds programs indefinitely without batteries
- ◆ Functions day or night in any weather and most outdoor locations
- ◆ All power is provided by an internal, ultrahigh efficiency photovoltaic module and microelectronic energy management system fueled by ambient light. Requires daily exposure to light levels no higher than the equivalent of 25% of the ambient light level at 55 degrees latitude under 10-year worst case weather conditions. No direct sunlight is required
- ◆ Assign rain, moisture or freeze sensors to an individual valve or to the entire system using SKIT 8821-4 connector
- ◆ Manual watering by station or program
- ◆ Liquid crystal display is easy to read under almost any lighting conditions

- ◆ Programming is easy using a self-guiding menu and four durable sealed buttons
- ◆ Lightning protection; the controller is fully isolated from electrical ground, offering virtual immunity to ground currents from overhead power-lines and/or close proximity lightning strike
- ◆ Simple to install easy-access wire connector accommodates standard irrigation wire up to 12 gauge
- ◆ Series 4000 controller fitted with a wiring connector strip that can handle a maximum of 8 station hot wires and 2 stations of common wires.
- ◆ Environmentally friendly uses clean power

Programming Features

- ◆ Four programs with 3-start times per program allow for mixed irrigation applications
- ◆ Duration's from one minute to 5 hours and 59 minutes to operate drip or sprinkler systems
- ◆ Custom programming with 7-day calendar or interval of 1 to 39 days in odd/even or every day rotation
- ◆ Individual monthly water budgeting from 10% to 200% in 10% increments
- ◆ Rain delay up to 99 days with auto-restart
- ◆ Status report for each valve verifies operating time for past and current month

Ordering Information

Standard series

Model 4004 4 stations plus MV/P

Model 4006 6 stations plus MV/P

Model 4008 8 stations including MV/P

LEIT

4000E Series Controller

Twelve and sixteen station expansion series



Features

All the same features as the 4000 Series plus:

- ◆ Operates 12 and 16 stations and a master valve or pump start without AC power hookup, batteries or conventional solar panels
- ◆ Series 4000E controller fitted with a wiring connector strip that can handle a maximum of 8 station hot wires and 2 common wires
- ◆ Each station port operates two actuators, with the first half of the stations using S series actuators or valve and the second half of the stations using E series actuators or valve

Mechanical Specifications

- Unit mounts securely to a rugged galvanized steel mounting column using stainless steel lock bolts
- Vandal resistant, water proof enclosure fashioned from super tough material endures extreme hot, cold, wet or dry weather
- Super-tough LEXAN™ lens protects the photovoltaic module from moisture, dust, chemicals and impact damage
- Dimensions: Height 9.4 inches (23.9 cm); Width 5.7 inches (14.5 cm); Depth 3.2 inches (8 cm)
- Weight: 2.6 lbs. (1.2 kg)
- Operational temperature: 14°F to 140°F (-10°C to 60°C)
- Storage temperatures range: -40°F to 194°F (-40°C to 90°C)

Security

- ◆ Programming password eliminates potential user error. Password can be changed at any time during program setup activation
- ◆ Standard stainless steel lock secures weather resistant exterior panel

Electrical Specifications

- Power for the LEIT 4000 series: internal photovoltaic module and exclusive microelectronic energy management system
- Power output to the valve actuators: digital control pulses @ 3.5 volts DC
- All circuitry is fully protected from electrostatic discharge to 27,000 volts
- Programming mode is activated by a LEIT key (not included) to energize the liquid crystal display

Ordering Information

Expansion series

Model 4012E 12 stations plus MV/P

Model 4016E 16 stations include MV/P



LEIT

X Series Controller

Ten through twenty-eight stations



The LEIT® Control X is the newest and most advanced in the DIG series of “light powered” water-management irrigation controllers. Built to the highest quality standards (ISO 9002), the LEIT Control X also has a new improved menu base with straightforward programming that allows for a wide range of irrigation programs. Features such as valve grouping, independent programs and more. An improved design, with our newest most advanced time-tested photovoltaic module which provides 14% more power, harnesses the energy of ambient light to power the unit day and night, anytime, anyplace. For sprinkler or drip systems. The LEIT X is a commercial quality water management controller for any type of environment and for a wide range of uses.

Features

- ◆ Operates 10, 12, 16, 20, 24 and 28 stations plus a master valve or pump start without AC power hookup, batteries or conventional solar panels
- ◆ Bilingual software in English and Spanish
- ◆ Controller functions and operations are 100% tested
- ◆ Controller water proofing is 100% tested
- ◆ Built to the highest quality control standard (ISO 9002)
- ◆ Non-volatile memory holds programs indefinitely without batteries
- ◆ Functions day or night and in any weather in most outdoor locations
- ◆ All power is provided by an internal, ultrahigh efficiency photovoltaic module and microelectronic energy management system fueled by ambient light. Requires daily exposure to light levels no higher than the equivalent of 25% of the ambient light level at 55° latitude under 10-year worst case weather conditions. No direct sunlight is required
- ◆ Can replace any LEIT 8000 or Solatrol controller with I500S or I500E actuator or older
- ◆ Compatible with most brands, styles and sizes of valves (refer to LEMA I500S series actuator specification sheet)
- ◆ Simple to install, easy access wire connector accommodates standard irrigation wire up to 12 gauge
- ◆ Terminal strip can handle 28 hot wire stations, 2 MV/P wires and 2 common wires
- ◆ Programming is easy, using a self-guiding menu and four durable sealed buttons
- ◆ Assign rain, moisture or freeze sensors to an individual valve or to the entire system using the SKIT 8821-4 adaptor
- ◆ Liquid crystal display is easy to read under almost any daylight conditions
- ◆ Lightning protection, the controller is fully isolated from electrical ground, offering virtual immunity to ground currents from overhead power lines and/or close proximity lightning strikes
- ◆ Environmentally friendly – uses clean power
- ◆ Manual watering or semi-automatic cycle by station with quick override



LEIT

X Series Controller

Ten through twenty-eight stations



Programming Features

- ◆ Four programs with three start-times per program allow for mixed irrigation applications
- ◆ Durations from one minute to 5 hours and 59 minutes available to operate drip or sprinkler systems
- ◆ Custom programming with 7-day calendar or interval of 1 to 39 days in odd/even or every day rotation
- ◆ Status report for each valve verifies actual watering time for the last and current months
- ◆ Individual monthly water budgeting from 10% to 200% in 10% increments
- ◆ Station custom grouping allows the controller to operate more than one group and any number of stations per group together (if hydraulic limitations are not exceeded)
- ◆ Rain delay up to 99 days with auto-restart

Mechanical Specifications

- Unit mounts securely to a rugged galvanized steel mounting column using stainless steel lock bolts
- Vandal resistant, water proof enclosure fashioned from highly durable material endures extreme hot, cold, wet or dry weather
- Super-tough LEXAN™ lens protects the photovoltaic module from moisture, dust, chemicals and impact damage
- Height: 12 inches (30.4 cm); Width: 7.5 inches (19 cm); Depth: 4.5 inches (11.4 cm); Weight: 4.9 lbs. (2.2 kg)
- Operational temperature: 14°F to 140°F (-10°C to 60°C)
- Storage temperature range: -40°F to 194°F (-40°C to 90°C)

Security

- ◆ Programming password eliminates potential error by another user
- ◆ Password can be changed at any time during program setup
- ◆ Standard stainless steel lock secures weather resistant exterior panel

Electrical Specifications

- Power: internal photovoltaic module and exclusive microelectronic energy management system
- Power output to the valve actuators: digital control pulses @ 3.5 volts DC
- All circuitry is fully protected from electrostatic discharge to 27,000 volts

Ordering Information

Model X10 10-stations plus MV/P
Model X12 12-stations plus MV/P
Model X16 16-stations plus MV/P
Model X20 20-stations plus MV/P
Model X24 24-stations plus MV/P
Model X28 28-stations plus MV/P



LEIT

XR Series Controller

Upgradeable to radio remote with up to twenty-eight stations



The LEIT Control® XR uses the most advanced technologies and innovations to provide the latest in ambient light irrigation control systems. Like the X, the XR combines state of the art electronics with advanced programming capability to make it a top choice for today's irrigation needs. Built to the highest quality standards (ISO 9002). The LEIT Control XR has easy to use programming features, including the ability to upgrade to radio remote capability with a distance of up to 2,000 feet. The XR incorporates all the features of the Model X, allowing users a wide range of flexibility without the requirements of AC power.

Features

- ◆ Operates 4, 6, 8, 10, 12, 16, 20, 24 and 28 stations plus a master valve or pump start without AC power hookup, batteries or conventional solar panels
- ◆ Can be hardware upgraded at the factory to operate with radio remote control
- ◆ Bilingual software in English and Spanish
- ◆ Controller functions and operations are 100% tested
- ◆ Controller water proofing is 100% tested
- ◆ Built to the highest quality control standard (ISO 9002)
- ◆ Non-volatile memory holds programs indefinitely without batteries
- ◆ Functions day or night and in any weather in most outdoor locations
- ◆ All power is provided by an internal, ultrahigh efficiency photovoltaic module and microelectronic energy management system fueled by ambient light. Requires daily exposure to light levels no higher than the equivalent of 25% of the ambient light level at 55° latitude under 10-year worst case weather conditions. No direct sunlight is required
- ◆ Can replace any LEIT 8000 or Solatrol controller with I500S or I500E actuator or older
- ◆ Compatible with most brands, styles and sizes of valves (refer to LEMA I500S series actuator specification sheet)

- ◆ Pre-installed software for the additional remote control
- ◆ Programming is easy, using a self-guiding menu and four durable sealed buttons
- ◆ Assign rain, moisture or freeze sensors to an individual valve or to the entire system using the SKIT 882 I-4 adapter
- ◆ Liquid crystal display is easy to read under almost any daylight conditions
- ◆ Simple to install, easy access wire connector accommodates standard irrigation wire up to 12 gauge
- ◆ Terminal strip can handle 28 hot wire stations, 2 MV/P wires and 2 common wires
- ◆ Lightning protection, the controller is fully isolated from electrical ground, offering virtual immunity to ground currents from overhead power lines and/or close proximity lightning strikes
- ◆ Manual watering or semi-automatic cycle by station with quick override



LEIT

XR Series Controller

Upgradeable to radio remote with up to twenty-eight stations



Programming Features

- ◆ Four programs with three start-times per program allow for mixed irrigation applications
- ◆ Durations from one minute to 5 hours and 59 minutes available to operate drip or sprinkler systems
- ◆ Custom programming with 7-day calendar or interval of 1 to 39 days in odd/even or every day rotation
- ◆ Status report for each valve verifies actual watering time for the last and current months
- ◆ Station custom grouping allows the controller to operate more than one group and any number of stations per group together (if hydraulic limitations are not exceeded)
- ◆ Individual monthly water budgeting from 10% to 200% in 10% increments
- ◆ Rain delay up to 99 days with auto-restart

Mechanical Specifications

- Unit mounts securely to a rugged galvanized steel mounting column using stainless steel lock bolts
- Super-tough LEXAN™ lens protects the photovoltaic module from moisture, dust, chemicals and impact damage
- Height: 12 inches (30.4 cm); Width: 7.5 inches (19 cm); Depth: 4.5 inches (11.4 cm); Weight: 4.9 lbs. (2.2 kg)
- Operational temperature: 14°F to 140°F (−10°C to 60°C)
- Storage temperature range: −40°F to 194°F (−40°C to 90°C)

Security

- ◆ Programming password eliminates potential error by another user.
- ◆ Password can be changed at any time during program setup
- ◆ Standard stainless steel lock secures weather resistant exterior panel

Electrical Specifications

- Power: internal photovoltaic module and exclusive microelectronic energy management system
- Power output to the valve actuators: digital control pulses @ 3.5 volts DC
- All circuitry is fully protected from electrostatic discharge to 27,000 volts

Ordering Information

Model XR04 4-stations plus MV/P
Model XR06 6-stations plus MV/P
Model XR08 8-stations plus MV/P
Model XR10 10-stations plus MV/P
Model XR12 12-stations plus MV/P
Model XR16 16-stations plus MV/P
Model XR20 20-stations plus MV/P
Model XR24 24-stations plus MV/P
Model XR28 28-stations plus MV/P



LEMA I 50x-xxx Series

Micropower Actuators with Valves



Valve Features

- ◆ Constructed of glass reinforced nylon with a stainless steel spring
- ◆ High flow with low pressure loss
- ◆ Normally closed
- ◆ Easy in line maintenance
- ◆ Smooth valve opening and closing prevents pressure surge hazards
- ◆ Rugged, reinforced self cleaning diaphragm provides reliable operation even with dirty water
- ◆ Flow control handle for water flow adjustment and manual shutoff
- ◆ Manual internal bleed override beneath the LEMA actuators for opening valve without external water spill

Materials

- ◆ Valve body and cover: Glass reinforced nylon
- ◆ Diaphragm: Nylon fabric reinforced polyisoprene (NR)
- ◆ Metal parts and screws: Stainless Steel 303
- ◆ Actuator body: ABS

Friction Loss Data

| Flow Rate | Flow Rate (gpm) | | | | | | | |
|-------------|-----------------|-----|-----|-----|-----|-----|-----|-----|
| | 5 | 9 | 13 | 18 | 22 | 26 | 31 | 35 |
| Size 3/4" | 3 | 3.5 | 4.2 | 6 | 7.2 | 8.5 | • | • |
| Size 1" | 3 | 3 | 4 | 4.5 | 5 | 5.5 | 7 | 8.5 |
| Flow Rate | 35 | 45 | 65 | 90 | 120 | 132 | 154 | 160 |
| Size 1-1/2" | 2.8 | 3.2 | 4.2 | 5.0 | 6.6 | 8.5 | • | • |
| Size 2" | | 2.7 | 3.1 | 4.3 | 5.3 | 6 | 8.5 | 9.1 |

| Flow Rate | Flow Rate m ³ /h | | | | | | | |
|-------------|-----------------------------|------|------|------|------|------|------|------|
| | 1 | 2 | 3 | 4 | 5 | 6 | 7 | 8 |
| Size 3/4" | 0.21 | 0.25 | 0.30 | 0.42 | 0.51 | 0.60 | • | • |
| Size 1" | 0.20 | 0.23 | 0.28 | 0.33 | 0.35 | 0.39 | 0.51 | 0.60 |
| Flow Rate | 55 | 10 | 15 | 20 | 27 | 30 | 35 | 36 |
| Size 1-1/2" | 0.20 | 0.22 | 0.30 | 0.35 | 0.46 | 0.60 | • | • |
| Size 2" | | 0.19 | 0.22 | 0.30 | 0.37 | 0.42 | 0.60 | 0.64 |

• Not recommended

Specifications

- 3/4", 1", 1 1/2" and 2" NPT female inlet and outlet
- Operating flow range:
 - 3/4": .1 to 28 gpm (.23 to 6.4 m3h)
 - 1": .2 to 35 gpm (0.45 to 8 m3h)
 - 1 1/2": 20 to 132 gpm (4.5 to 30 m3h)
 - 2": 30 to 160 gpm (6.8 to 36 m3h)
- Operating pressure: 10 to 150 psi, (.7 to 10.5 bar)
- Valve temperature range: up to 170°F (82°C)
- Body style: globe

Dimensions

- ◆ Valve dimensions: 3/4" and 1": 4.5" H x 4.25" L x 3.12" W, (11.5 cm H x 11 cm L x 8 cm W)
- ◆ Valve dimension: 1 1/2": 7.12" H x 6.12" L x 5.75" W, (18 cm H x 16 cm L x 14.5 cm W)
- ◆ Valve dimension: 2": 8.5" H x 6.12" L x 5.75" W, (21 cm H x 16 cm L x 14.5 cm W)
- ◆ Solenoid thread: .75"-20 UNES-2A

Ordering Information

- I 50S-075 Actuator on 3/4" in-line valve
- I 50S-100 Actuator on 1" in-line valve
- I 50S-150 Actuator on 1-1/2" in-line valve
- I 50S-200 Actuator on 2" in-line valve
- I 50E-075 Actuator on 3/4" in-line valve
- I 50E-100 Actuator on 1" in-line valve
- I 50E-150 Actuator on 1-1/2" in-line valve
- I 50E-200 Actuator on 2" in-line valve

LEIT

LEMA 1500 Series *Micropower Actuators*



LEMA Micropower Actuators replace conventional solenoids on most popular sizes and styles of valves, enabling the LEIT series of irrigation controllers to operate valves without AC power, batteries or any other external source of power. Once the original solenoid is removed, the actuator is simply screwed into the solenoid's receptacle. The actuator converts low current pulses generated by the LEIT series controllers into two high current pulses required to latch the plunger to open or closed.

Actuator Features

- ◆ Adaptable to a wide range of valves
- ◆ Waterproof construction
- ◆ Surge protected
- ◆ Two color coded 12" wires
- ◆ Available completely assembled with threaded adapters for different brand name valves

Electrical Specifications

- DC latching solenoid
- Low voltage DC bipolar pulse

Mechanical Specifications

- Actuator available in two series:
LEMA 1500S series (specify valve type, size and model)
LEMA 1500E series (for Expansion stations on Expansion controllers only)
- Dimensions: Length approx. 3.25" (8.2 cm); Width approx. 1.7" (4.3 cm); Height approx. 2" (5.0 cm)
- Weight: approx. .5 lb. without stem (250 G)

Maximum Wire Runs

| Wire Gauge | Maximum Run | |
|------------|-------------|-------|
| 14 AWG | 1,500 feet | 454 m |
| 12 AWG | 2,400 feet | 727 m |

Ordering Information

- LEMA 1520S (Standard) / LEMA 1520E (Expansion):
For Bermad, Buckner VP, Royal Coach and Toro valves
- LEMA 1521S / LEMA 1521E:
For Rainbird DV, DVF, PGA, PEB, GB, EFB, BPE series, brass and plastic valves
- LEMA 1524S / LEMA 1524E:
For Weathermatic valves
- LEMA 1525S / 1525E:
For Superior valves, Superior manual valve adapters (except for EA models), and Hunter HBV series valves
- LEMA 1526S / 1526E:
For Toro 252 valves (1.5" and larger)
- LEMA 1527S / 1527E:
For Griswold 2000 and DW valves
- LEMA 1529S / 1529E:
For Irritrol (Richdel & Hardie) valves and Toro 220
- LEMA 1530S / 1530E:
For Nelson Pro 7900 valves
- LEMA 1531S / 1531E:
For Toro Flo Pro valves

NOTE: You can identify the actuator type by the label on the actuator body (1500S or 1500E series) and the model of the actuator by the label on the metal bracket, showing two digits (e.g. "21" for a 1521S or 1521E).



LEIT Accessories



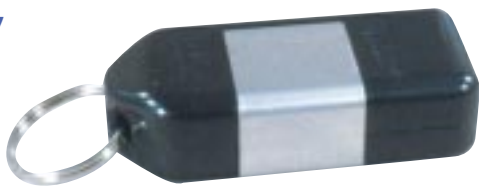
Stainless Steel Enclosure

Though the LEIT series of irrigation controllers are manufactured with a vandal resistant case, some customers may desire additional protection for their LEIT series controller. DIG's stainless steel enclosures come in two sizes to fit either the LEIT 4000 or the LEIT X series controllers. Each enclosure is made out of the highest quality stainless steel and offers top of the line weather and vandal resistance.

Enclosure Features

- ◆ Manufactured using the highest quality stainless steel material
- ◆ Weatherproof, rustproof and extremely durable
- ◆ Design ensures light access through grid on top
- ◆ Easy to install with a standard 3/8" socket wrench
- ◆ Installation of the enclosure does not require the controller to be removed or modified in any way
- ◆ Airflow holes on top and bottom of each enclosure control the temperature inside

LEIT Key



Key Features

- ◆ The LEIT key, powered by a 9-volt battery, prevents unauthorized access to the controller's schedule and programs
- ◆ Easy installation of one 9-volt battery

Ordering Information

Model LEIT KEY programming tool to program the LEIT controller

Security

- ◆ Heavy-duty stainless steel provides maximum strength
- ◆ Internal hinge eliminates forceful removal of the door
- ◆ Stainless steel mounting clamp is only accessible from inside the enclosure, no unauthorized removal of the enclosure is possible
- ◆ Each enclosure comes with a high security stainless steel disc-lock to ensure only authorized access to the controller

Mechanical Specifications

- 14 AWG 304 Stainless Steel case
- Dimensions for 4000 series: 10.8" H (27.4 cm) x 7.5" W (19 cm) x D 3.8" (9.6 cm)
- Weight for 4000 series: 6.2 lbs (2.8 kg)
- Dimensions for X series: 14" H (35 cm) x 8.7" W (22 cm) x 6" D (15 cm)
- Weight for X series: 10.9 Lbs. (5 kg)

Ordering Information

Model ENCL 4000 – LEIT 4000 series enclosure

Model ENCL X – LEIT X series enclosure



LEIT Accessories



Mounting Column

Mounting column designed with a curved bottom to allow easy access to the actuators wires and is available in two sizes for LEIT 4000 and LEIT X

Mechanical Specifications

4000 Series:

- Column weight short: approx. 9 lbs (4.1 kg)
- Column weight long: approx. 13.5 lbs (6.1 kg)

Mechanical Specifications

X Series:

- Column weight short: approx. 11 lbs (5 kg)
- Column weight long: approx. 14 lbs (6.3 kg)
- Column material: galvanized steel

Column Features

- ◆ Includes mounting kit
- ◆ Mounting columns are available in two different sizes
- ◆ Mounting columns are available with two different OD: small OD for the 4000 series and larger OD for the LEIT X series

Ordering Information

Model MCOL 4000 mounting column 32" (81 cm) short
Model MCOL 4000L mounting column 48" (124 cm) long
Model MCOLXS mounting column 35" (89 cm) short
Model MCOLXL mounting column 50" (127 cm) long

SKIT 8821-4 Switch Type Sensor Adapter

The SKIT switch-type sensor weatherproof adapter provides a quick, reliable way to connect compatible rain, freeze, moisture and other normally closed switch-type sensors either directly to the LEIT series of irrigation controllers or directly to one of the series of micro-power actuators.

SKIT 8821-4 Features

- ◆ Waterproof construction
- ◆ Easy to install
- ◆ Adapts to a wide range of sensors

Sensor Recommendation

- ◆ Recommended rain sensors are the Rain Bird RSD and the Hunter Mini-Clik.
- ◆ Recommended moisture sensors are the Irrrometer RA and TGA series.
- ◆ Recommended freeze sensor is the Hunter Freeze-Clik.



Mechanical Specifications

- Compatible with normally closed switch type sensors only
- Comes with 12" 12 gauge wire
- Length: approx. 1.25 inches (3.1 cm)
- Diameter: approx. 0.75 inches (1.9 cm)
- Weight: approx. 2 oz. (56 G)

Ordering Information

Model SKIT 8821-4 sensor adapter

LEIT Accessories



RKIT 8810S and 8810E Relay Interface Kit

The RKIT Relay interface provides a simple, reliable, waterproof way to switch a relay of an AC or DC circuit. The LEIT series controllers can be used to turn a pump on and off. To enable the LEIT controller to use the RKIT to turn on a pump, the RKIT must be connected to the station connector strip unit labeled MV/P. If any other AC or DC equipment is needed for relay switching, it can be connected to any other available station connector strip.

Relay Interface Kit Features

- ◆ Waterproof construction
- ◆ Easy to install

Choosing the Correct RKIT Model

- ◆ The RKIT 8810S is used for installation with a LEIT 4000, LEIT X and for standard stations on LEIT 4000E series control units
- ◆ The RKIT 8810E is used for Expansion stations on the LEIT 4000E series control units

Electrical Specifications

- RKIT 8810S and RKIT 8810E can be used to switch into a circuit between 24V AC/DC and 230V AC/DC

Mechanical Specifications

- Length: approx. 1.9 inches (4.7 cm)
- Diameter: approx. 1.1 inches (2.7 cm)
- Weight: approx. 8 oz. (220 G)

Ordering Information

Model RKIT 8810S Relay interface for Standard stations

Model RKIT 8810E Relay interface for Expansion stations



The DIG 3-Year Warranty

DIG CORP. WARRANTS TO ITS CUSTOMERS WHO HAVE PURCHASED LEIT PRODUCTS, FROM AN AUTHORIZED DIG DISTRIBUTOR, THAT ITS PRODUCTS WILL BE FREE FROM ORIGINAL DEFECTS IN MATERIAL AND WORKMANSHIP FOR A PERIOD OF THREE (3) YEARS, FROM THE DATE OF ORIGINAL PURCHASE EXCEPT AS TO PRODUCT DESCRIBED IN SUBSECTION (A).

IF ANY APPARENT DEFECT ARISES UNDER NORMAL USE AND SERVICE IN THE LEIT PRODUCT WITHIN THE WARRANTY PERIOD, DIG AT ITS SOLE DISCRETION, SHALL HAVE THE OPTION TO REPAIR OR REPLACE PART OR ALL OF THE ORIGINAL PRODUCT FREE OF CHARGE AFTER RETURN OF SUCH PRODUCT AT USER EXPENSE, AUTHORIZED IN WRITING BY DIG CORP. IF A PRODUCT IS REPLACED, THE REPLACEMENT PRODUCT WILL BE COVERED FOR THE REMAINDER OF THE WARRANTY PERIOD DATING FROM THE ORIGINAL PURCHASE

(A). LEIT CONTROLLERS WITH LEIT STAINLESS STEEL ENCLOSURES WARRANTED TO BE FREE FROM ORIGINAL DEFECTS IN MATERIAL AND WORKMANSHIP FOR A PERIOD OF THREE (3) YEARS, FROM THE DATE OF ORIGINAL PURCHASE, EXCEPT FOR STAINLESS STEEL ENCLOSURES PURCHASED PRIOR TO 1/8/ 2001, THESE UNITS WILL BE WARRANTED TO 12/31/2004

THIS WARRANTY APPLIES ONLY TO THE DIG LEIT PRODUCT LINE, WHICH ARE INSTALLED AS SPECIFIED AND USED FOR IRRIGATION PURPOSES. THIS WARRANTY APPLIES ONLY TO PRODUCTS, WHICH HAVE NOT BEEN ALTERED, MODIFIED, DAMAGED, MISUSED OR MISAPPLIED. THIS WARRANTY DOES NOT COVER PRODUCTS ADVERSELY AFFECTED BY THE SYSTEM INTO WHICH THE PRODUCTS ARE INCORPORATED, INCLUDING IMPROPERLY DESIGNED, INSTALLED, OPERATED, OR MAINTAINED SYSTEMS. THIS WARRANTY DOES NOT APPLY TO BLOCKAGE OF SOLENOIDS DUE TO USE OF WATER CONTAINING CORROSIVE CHEMICALS, ELECTROLYTES, SAND, DIRT, SILT, RUST, SCALE, ALGAE, BACTERIAL SLIME OR OTHER ORGANIC CONTAMINANTS.

TAMPERING WITH A PRODUCT (INCLUDING, BUT NOT LIMITED TO ATTEMPTING TO DISASSEMBLY) WILL VOID ANY WARRANTY THE PRODUCT MIGHT OTHERWISE BE ELIGIBLE FOR. IN NO EVENT SHALL DIG'S LIABILITY EXCEED THE SELLING PRICE OF THE PRODUCT. DIG IS NOT LIABLE FOR CONSEQUENTIAL, INCIDENTAL, INDIRECT OR SPECIAL DAMAGES, INCLUDING BUT NOT LIMITED TO THE LABOR TO INSPECT, REMOVE OR REPLACE PRODUCTS, VEGETATION LOSS, LOSS OF ENERGY OR WATER, COST OF SUBSTITUTE EQUIPMENT OR SERVICES, PROPERTY DAMAGE, LOSS OF USE OR LOSS OF PROFITS; NOR IS DIG LIABLE FOR ECONOMIC LOSSES, CONSEQUENTIAL DAMAGES OR DAMAGE TO PROPERTY ARISING OUT OF INSTALLER'S NEGLIGENCE OR BASED ON STRICT LIABILITY IN TORT. THE USER AND/ OR TRADE CUSTOMER AGREES TO THE LIMITATIONS AND EXCLUSIONS OF LIABILITY OF THIS WARRANTY BY PURCHASE OR USE OF DIG PRODUCTS. . NO REPRESENTATIVE, AGENT, DISTRIBUTOR OR OTHER PERSON HAS THE AUTHORITY TO WAIVE, ALTER, OR ADD TO THE PRINTED PROVISIONS OF THIS WARRANTY, OR TO MAKE ANY REPRESENTATION OF WARRANTY NOT CONTAINED HERE.

SOME STATES DO NOT PERMIT THE EXCLUSION OR LIMITATION OF INCIDENTAL OR CONSEQUENTIAL DAMAGES OR OF IMPLIED WARRANTIES. THEREFORE, SOME OF THE ABOVE EXCLUSIONS OR LIMITATIONS MAY NOT APPLY TO YOU.

THIS WARRANTY ON LEIT PRODUCTS IS GIVEN EXPRESSLY AND IN PLACE OF ALL OTHER EXPRESSED OR IMPLIED WARRANTIES OF MERCHANTABILITY AND FITNESS FOR PARTICULAR PURPOSE, AND THIS WARRANTY IS THE ONLY WARRANTY ON LEIT PRODUCTS LINE MADE BY DIG CORP

FOR MORE INFORMATION OR FOR LEIT 3 YEARS EXTENDED WARRANTY SEE YOUR DIG CORP DISTRIBUTOR OR CALL 1800-322-9146 OR 760-727-0914

COPYRIGHT 2003 DIG CORPORATION. ALL RIGHTS RESERVED, LEIT NAME AND LOGO ARE REGISTERED TRADEMARK AND LEIT X, LEIT XR, LEIT XRC AND DIG LOGO ARE TRADENAMES OF DIG CORPORATION



1210 Activity Drive • Vista, California 92081-8510
800-322-9146 • 760-727-0914 • FAX 760-727-0282
www.digcorp.com • email: dig@digcorp.com

